



INSTRUCTION MANUAL

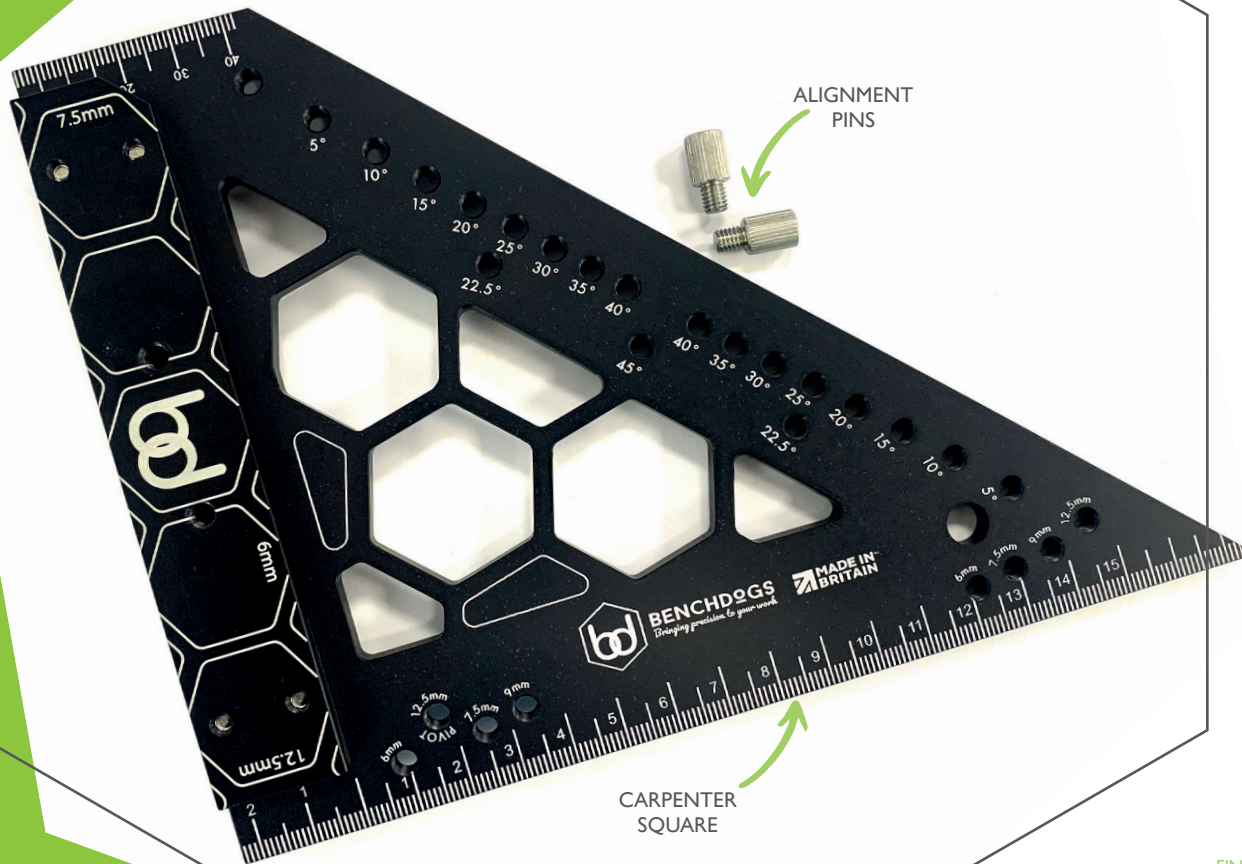
Carpenter Square

BENCHDOGS

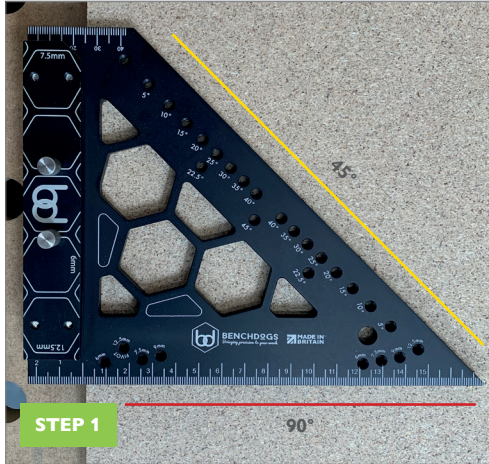
WHAT'S IN THE KIT

1 x Carpenter Square ◀

2 x Alignment Pins ◀



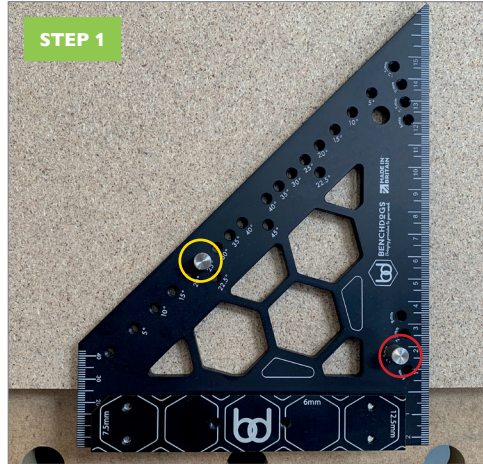
FIND ALL INSTRUCTION MANUALS AT
WWW.BENCHDOGS.CO.UK



STEP 1

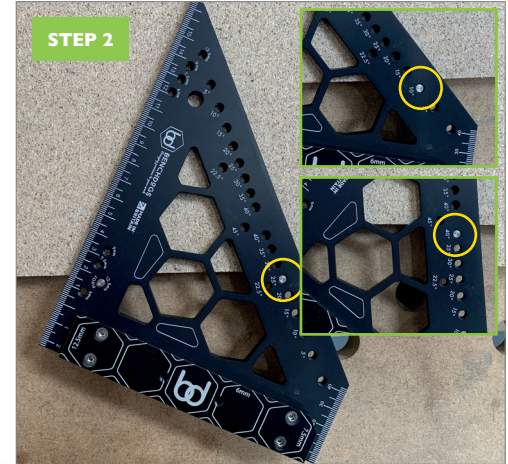
Place the carpenter square so the cheek is touching the side of your sheet. Using either the straight or diagonal edge, make your markings at either 90° or at 45°.

STEP 1



Using the supplied alignment pins, screw the first pin (RED) in the hole marked 'PIVOT' and the second pin (YELLOW) in the hole marked with your desired angle.

STEP 2



Turn over your carpenter square and place so the alignment pins are touching the edge of your sheet. Make your markings at either 5, 10, 15, 20, 22.5, 25, 30, 35, 40 or 45° by adjusting the second pin (YELLOW)

STEP 1



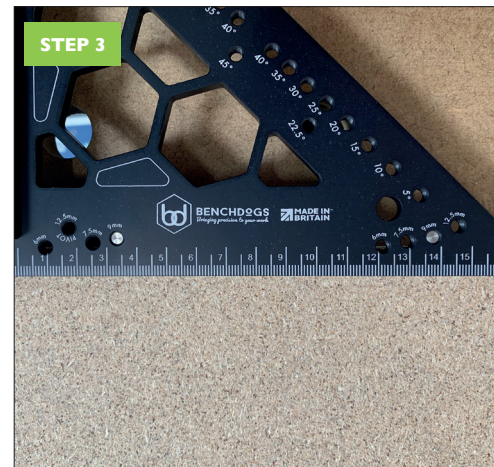
Find the holes marked 6mm, 7.5, 9 and 12.5mm.

STEP 2

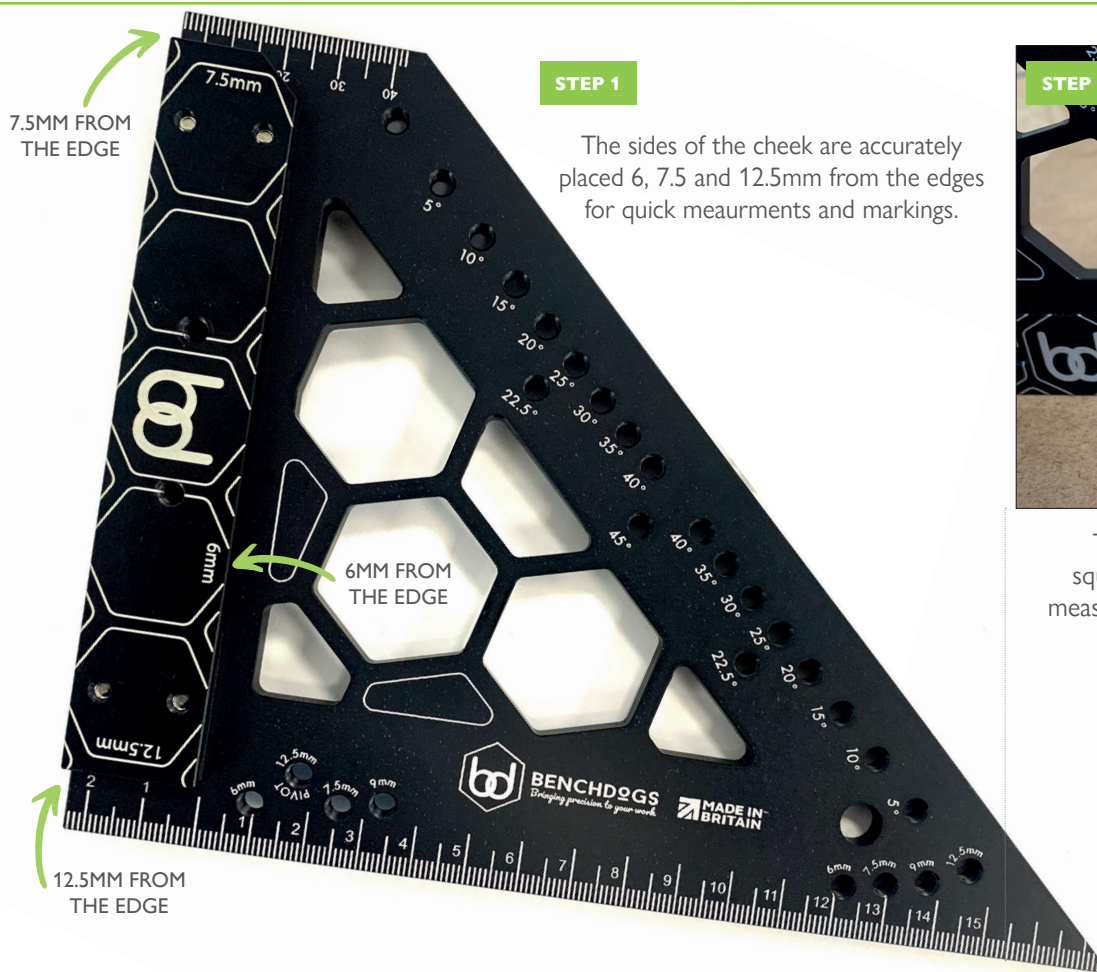


Choose your desired measurement and screw in the supplied alignment pins in the matching marked holes.

STEP 3



Turn over your carpenter square and place so the alignment pins are touching the edge of your sheet. This will allow you to make accurate markings at 6mm, 7.5, 9 and 12.5mm from the edge.



The flat corner to the carpenter square has handy markings for quick measurements and is also accurately 90°.



BENCHDOGS

Bringing precision to your work



WWW.BENCHDOGS.CO.UK

MADE IN BRITAIN