



INSTRUCTION MANUAL

MK2 Parallel Guide System

BENCHDOGS

WHAT'S IN THE KIT

1. FENCE PAIRS ◀

2. ALUMINIUM STOPS ◀

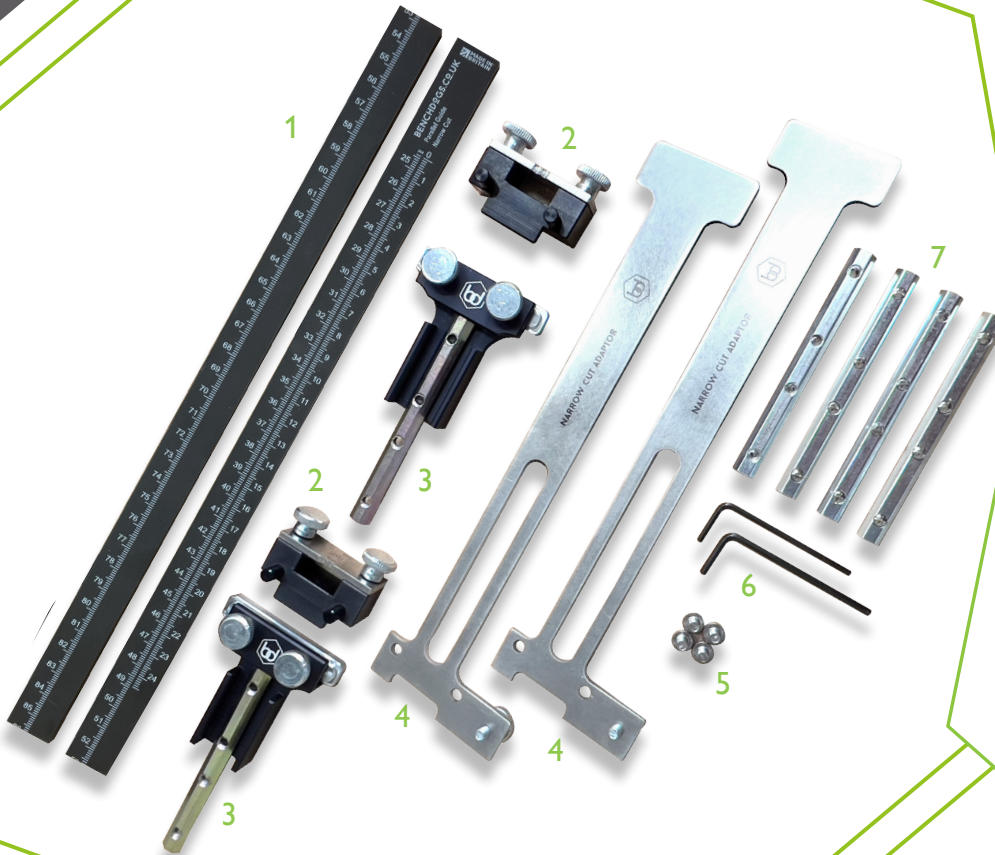
3. TRACK ADAPTORS ◀

4. NARROW CUT ADAPTORS ◀

5. SCREWS M5 ◀

6. HEX KEY 3MM & 2.5MM ◀

7. JOINING BARS ◀

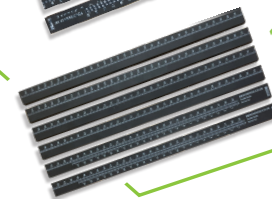


Options Available

2x 330mm
4x Joining Bars



2x 500mm
6x Joining Bars



FIND ALL INSTRUCTION MANUALS AT
WWW.BENCHDOGS.CO.UK

STEP 1



Have the selected parts available for each adaptor.

- 1 x track adaptor
- 1 x T Slot Bar
- 2 x M5 Thumbscrew

STEP 2



Insert M5 Thumbscrew through Track adaptor and attach to t slot bar.

STEP 3



Repeat for other hole and repeat for the other track adaptor.

STEP 4



Locate joining bar and remove the grub screws (these will not be needed again)

STEP 5



Place the joining bar upside down on the track adaptor and line up the holes

STEP 6



Locate the black M5 Countersunk screws

STEP 7



Fit M5 black screws and leave loose

STEP 8



Align the fence in the slot with the joining bar

STEP 9



Slide in the fence in the slot to the end of the track adaptor

STEP 10



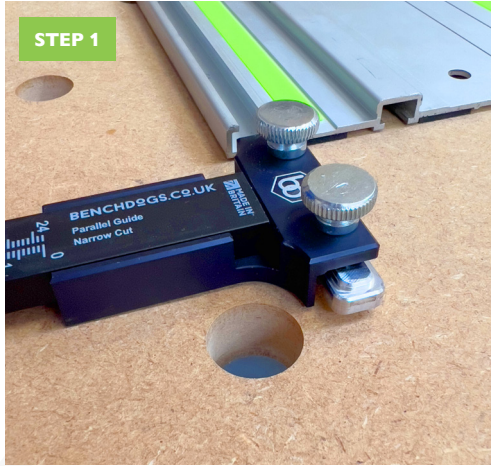
STEP 11



Tighten up the screws to secure the fence in the track adaptor



STEP 1



Ensure the thumbscrews are loose

STEP 2



Slide track adaptor into top slot of your track

STEP 3



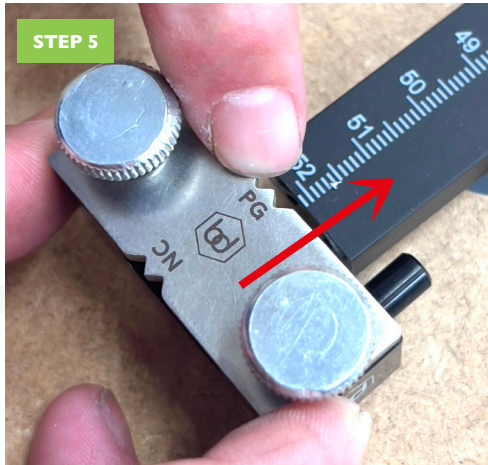
Set the spacing for each track adaptor approximately 100mm in from the edge of your work piece

STEP 4



Tighten each thumbscrew to fix each adaptor into place

STEP 5

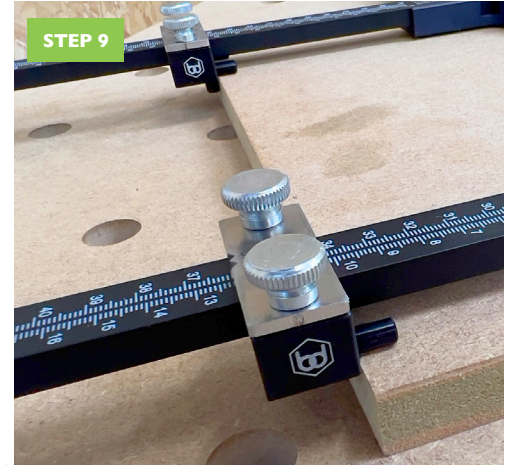
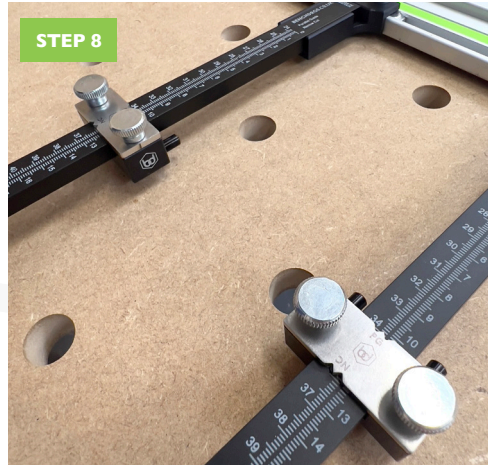
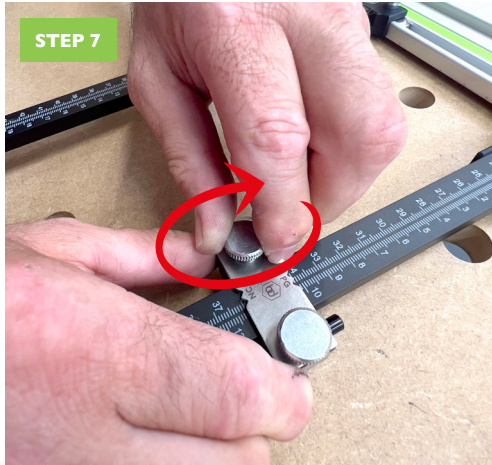


Insert each aluminium stop block into each track with the setting PG towards your track, this will line up with your markings with the pointer

STEP 6



Set the desired length for each cut, (ensure you have calibrated your fence first)

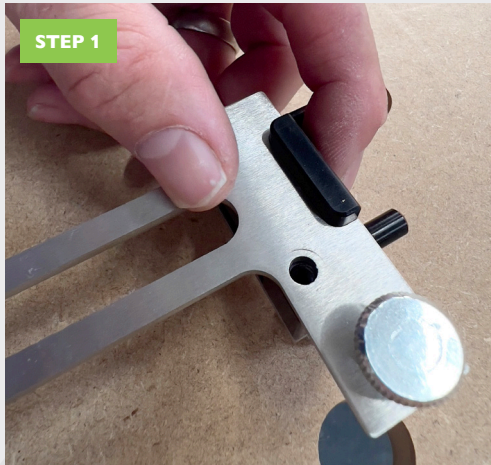


Tighten the thumbscrews to lock into place

Repeat the same process on each parallel guide

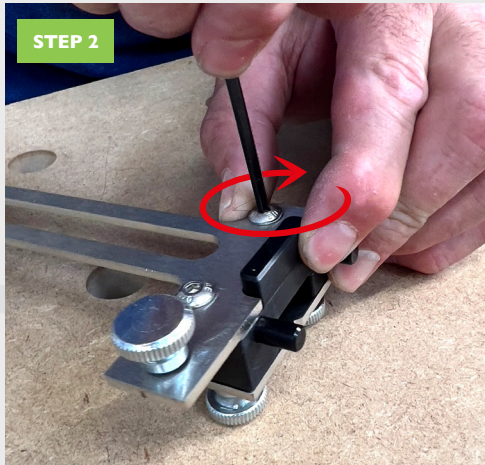
Rest the pins on your workpiece and the lower stop against your workpiece and make your cut.

STEP 1



Remove the stops from your already calibrated fence and flip over to the bottom, you will see two m5 tapped holes, place the Narrow Cut Adaptor with the leveling thumbscrew head facing you.

STEP 2



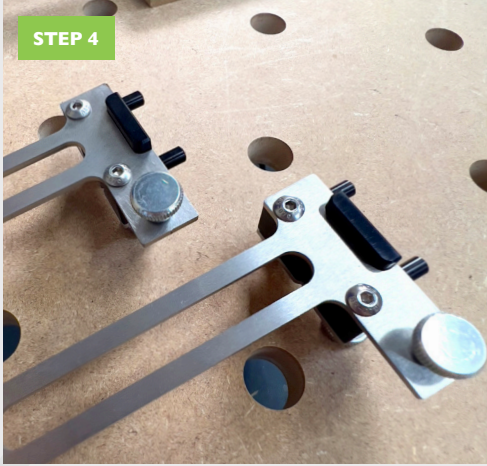
Using the supplied 3mm hex key and the button screws, connect to the stop block

STEP 3



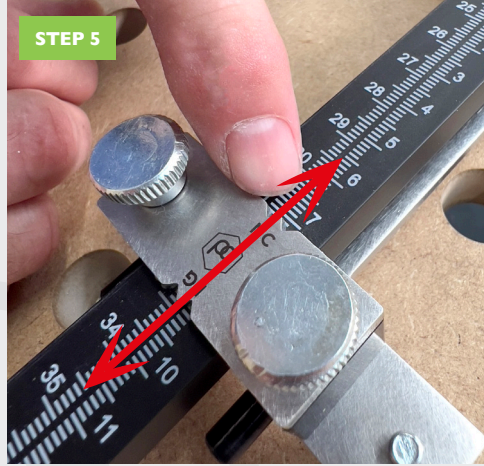
Ensure both screws are fitted

STEP 4



Repeat for both stops

STEP 5



Slide the stops to the desired narrow cut measurement the NC pointer should be over these lines

STEP 6





The NCA should look like this photo

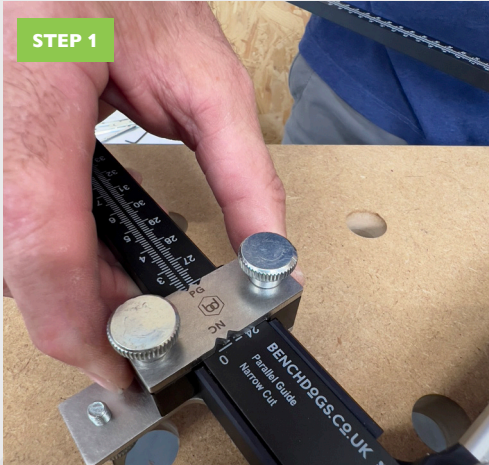


Slide track to the work piece



Adjust the height to suit the work piece. This will level your track and stop tilting up to 18mm

STEP 1



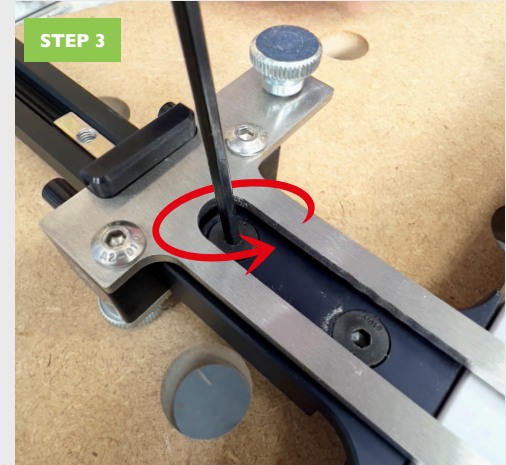
Set the stop block to the NC (Narrow Cut) Side with the Narrow Cut Adaptor (NCA) fitted, and set the stop to 0 (zero) to ensure you have set both stops.

STEP 2



Lockdown both thumbscrews to lock them into place

STEP 3

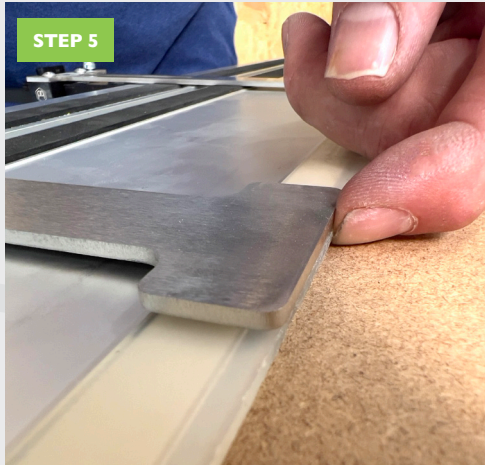


Loosen the 2 black screws on the track adaptors enough to let the extrusion move. Repeat this process on both track adaptors.



STEP 4

Slide the NCA level to the edge of your cutting strip.



STEP 5

Ensure they are level on both adaptors. This has now calibrated your stops for both Parallel and Narrow cut



STEP 6

Check with a pencil to ensure calibration is correct



BENCHDOGS

Bringing precision to your work



WWW.BENCHDOGS.CO.UK

MADE IN BRITAIN