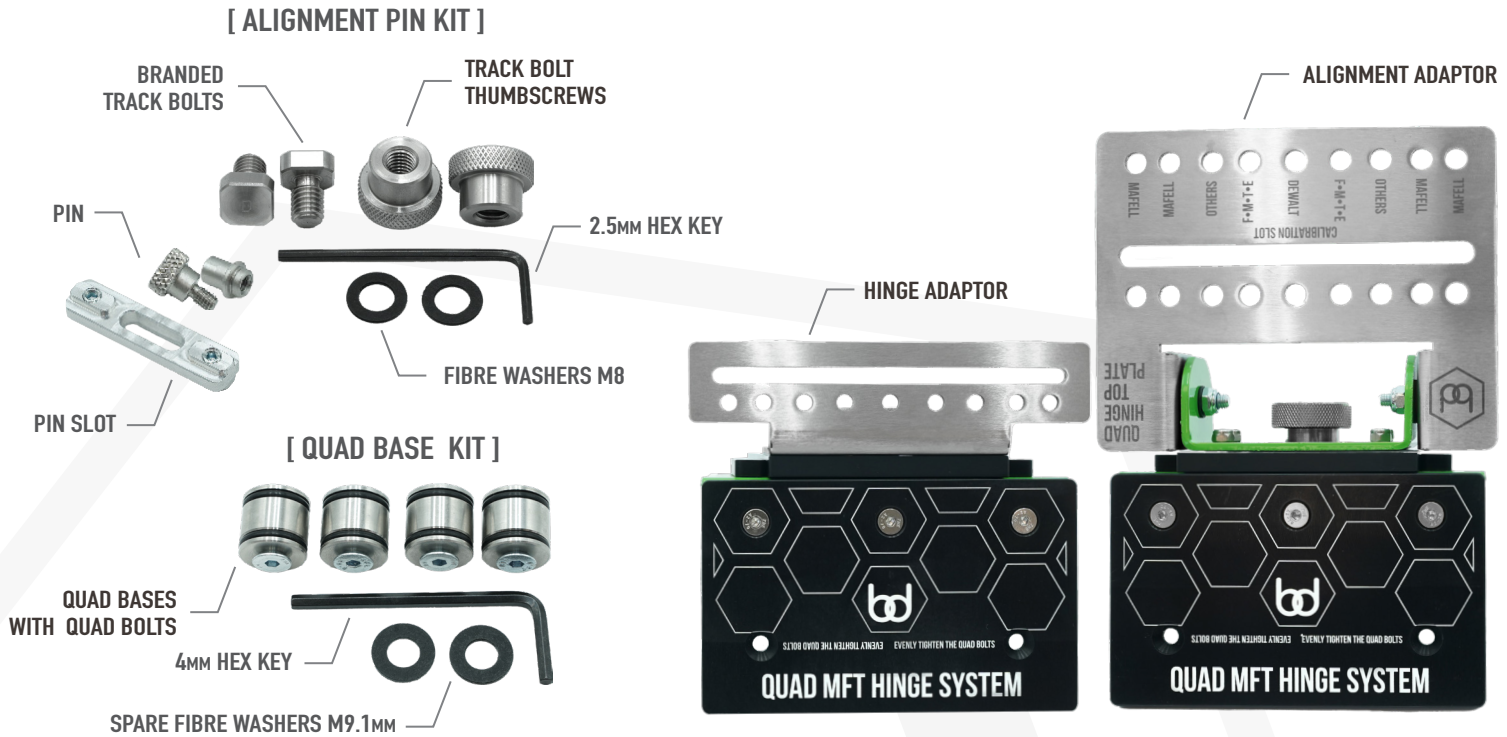
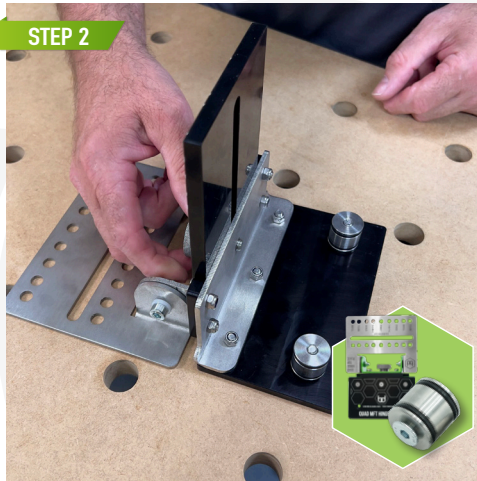


QUAD MFT HINGE SYSTEM SET UP INSTRUCTIONS



STEP 1

TAKE THE ALIGNMENT HINGE ADAPTOR PLATE AND (2X) THE QUAD BASES WITH ATTACHED BOLTS, THEN PLACE THEM IN THE COUNTERSUNK HOLES.



STEP 2

TAKE THE ALIGNMENT HINGE ADAPTOR PLATE AND THE OTHER (2X) QUAD BASES WITH ATTACHED BOLTS THEN FOLLOW THE SAME STAGES IN STEP 1.



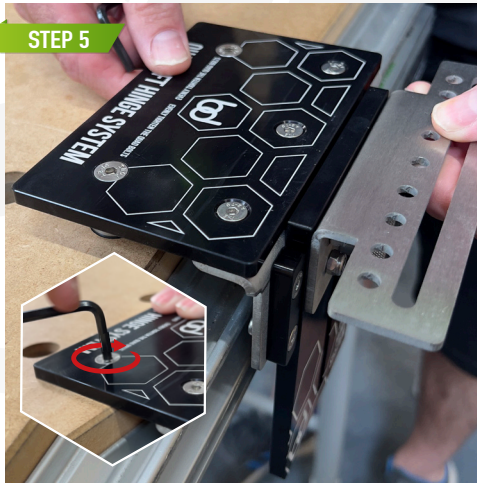
STEP 3

USING THE PRE-DRILLED HOLES IN YOUR MFT TOP, ENSURE THAT THE HOLES ARE A MAXIMUM DISTANCE OF 35MM FROM THE EDGE OF THE TABLE. IF YOU'RE USING OUR 346 HOLE JIG WE ADVISE THE HOLES ARE 48MM FROM A ROW OF HOLES.



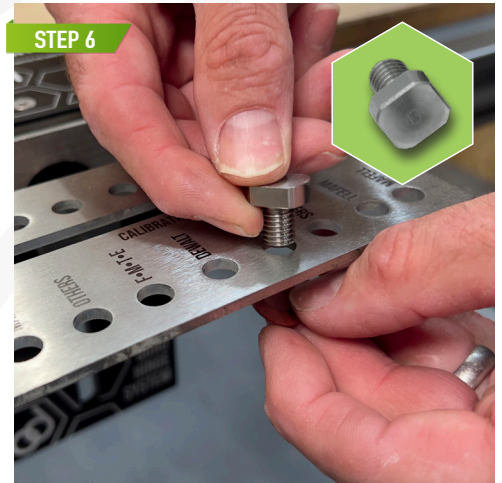
STEP 4

LOCATE THE QUAD BASES AND INSERT ALIGNMENT ADAPTOR PLATE INTO THE FIRST TWO HOLES CLOSEST TO YOU AND LOCK THIS INTO PLACE USING THE 4MM HEX KEY TO TIGHTEN THE QUAD BASES UNTIL THERE IS NO MOVEMENT.



STEP 5

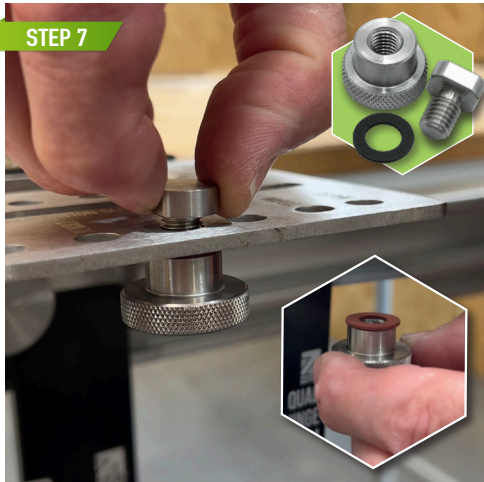
REPEATING STEP 3 ON THE OTHER SIDE OF YOUR MFT TABLE AND INSERT THE HINGE ADAPTOR PLATE AND TIGHTEN IN THE SAME WAY AS STEP 4.



STEP 6

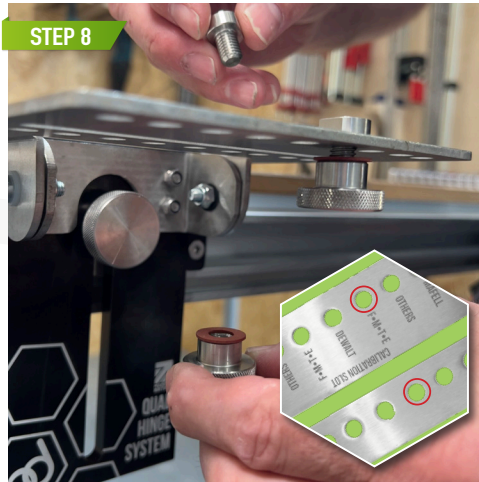
USING THE SUPPLIED TRACK BOLT, INSERT THESE INTO THE LABELLED TRACK BRAND HOLE. (FMTE - FESTOOL, MAKITA, TRITON, EVOLUTION)

QUAD MFT HINGE SYSTEM SET UP INSTRUCTIONS



STEP 7

USING ONE M8 FIBRE WASHER, ATTACH THE TRACK BOLT WITH THE KNURLED FEMALE TRACK BOLT THUMBSCREW. ENSURE THERE IS PLAY LEFT TO ALLOW THE TRACK TO SLIDE IN.



STEP 8

FOLLOW THE SAME INSTRUCTION AS STEP 7 WITH THE OTHER M8 FIBRE WASHER AND FEMALE TRACK BOLT THUMBSCREW. PUTTING THIS IN ALIGNED WITH THE TRACK BOLT YOU HAVE PREVIOUSLY FITTED.



STEP 9

TAKE THE SUPPLIED PIN SLOT AND LOOK AT WHAT SIDE YOU WILL NEED, DEPENDING WHAT BRAND OF TRACK YOU OWN. THE DEWALT SIDE WILL HAVE TWO MACHINED PROTRUSIONS AND THE FESTOOL, MAKITA, TRITON, MILWAUKEE, METABO, ERBAUER, KREG ACS WILL HAVE ONE PROTRUSION.



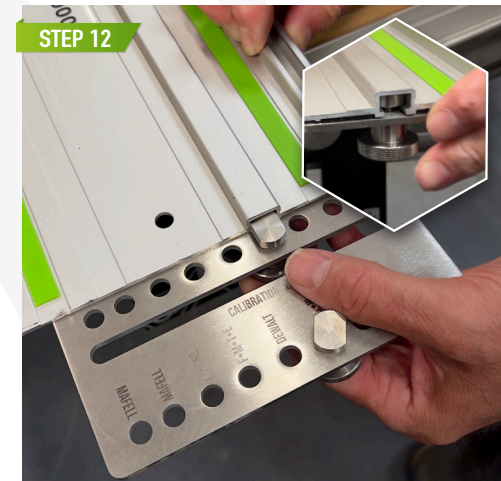
STEP 10

ONCE THE PIN SLOT IS MOVED INTO POSITION YOU CAN LOCK THIS INTO PLACE USING A 2.5MM HEX KEY.



STEP 11

TAKE THE PIN AND UNSCREW THE TWO PARTS. ALIGN THIS IN THE HOLE THAT SITS OPPOSITE TO YOUR TRACK BOLTS AND SCREW THE TWO HALVES OF THE PIN BACK TOGETHER TO SECURE THIS ONTO YOUR HINGE ADAPTOR PLATE.



STEP 12

ON YOUR ALIGNMENT ADAPTOR PLATE WITH THE TRACK BOLTS ATTACHED, YOU NEED TO SLIDE YOUR TRACK INTO YOUR TRACK BOLTS AND TIGHTEN THE THUMBSCREWS TO SECURE THIS INTO PLACE.



STEP 13

ONCE THE TRACK IS ATTACHED YOU CAN NOW BRING YOUR TRACK DOWN TO MEET UP WITH YOUR PIN, MAKING SURE THAT THE PIN SITS INSIDE THE PIN SLOT.



STEP 14

CHECK THAT THE HINGE LIFTS INTO A VERTICAL POSITION AND IT STAYS IN AN UPRIGHT OR LOWERING POSITION. THERE WILL BE SOME LATERAL MOVEMENT, THIS IS NORMAL AND WILL NOT MOVE ONCE LOCATED IN THE ALIGNMENT PIN



STEP 15

ADJUST TENSION TO ACHIEVE THE DESIRED FORCE TO ALLOW THE TRACK TO HOLD ITSELF.

QUAD MFT HINGE SYSTEM SET UP INSTRUCTIONS

CALIBRATION STEPS

IF YOUR MFT IS NOT SQUARE YOU CAN STILL ACHIEVE SQUARE CUTS BY MOVING 2 PARTS AND CALIBRATING TO YOUR FENCE OR YOUR PRECISION TRIANGLE WITH BENCH DOGS.

STEP 1



MOVE THE ALIGNMENT PIN INTO THE LONG SLOT AND LEAVE LOOSE.

STEP 2



MOVE THE INNER TRACK BOLT AND PLACE THIS INTO THE CALIBRATION SLOT AND LEAVE LOOSE.

STEP 3



LINE UP YOUR TRACK WITH THE TRACK BOLTS AND SLIDE IN.

STEP 4



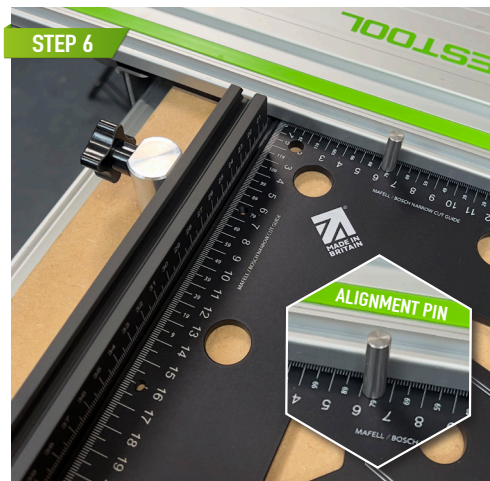
LEAVE THE FENCE DOGS LOOSE SO THAT THE FENCE IS ABLE TO SLIDE FREELY. ALIGN THE FENCE UP AGAINST THE ALIGNMENT ADAPTER PLATE.

STEP 5



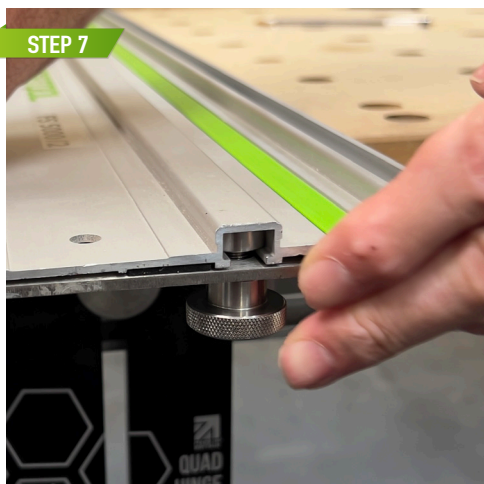
PUT THE TRACK DOWN ON TOP OF THE FENCE AND SLIDE THE FENCE ALONG SO IT IS IN LINE WITH THE EDGE OF THE TRACK, THEN TIGHTEN UP YOUR FENCE DOGS.

STEP 6



CHECK THE SQUARENESS OF THE TRACK USING OUR PRECISION TRIANGLE. USE THIS TO SQUARE UP YOUR TRACK WITH THE FENCE OR USING BENCH DOGS.

STEP 7



ONCE SQUARE, TIGHTEN THE THUMBSCREW ON THE TRACK BOLT AND RE-CHECK FOR SQUARENESS.

STEP 8



ALIGN THE TRACK TO THE ALIGNMENT PIN AND PUT THE TRACK DOWN ONTO THE PIN.

STEP 9



TIGHTEN THE ALIGNMENT PIN HEX BOLT WITH THE HEX KEY AND YOUR TRACK IS NOW CALIBRATED.