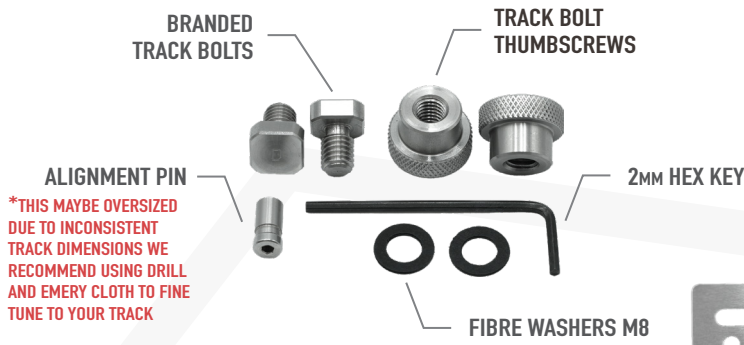
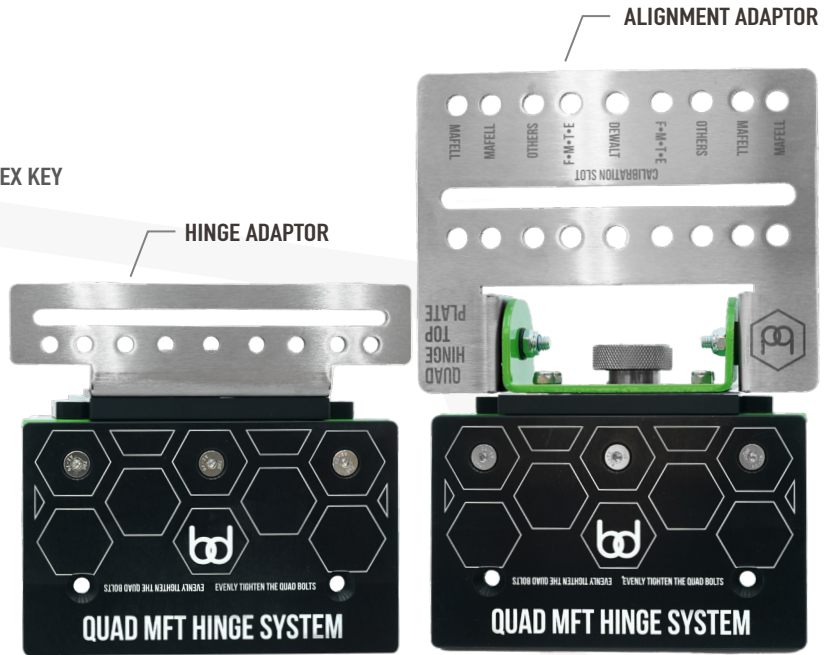


# QUAD MFT HINGE SYSTEM SET UP INSTRUCTIONS

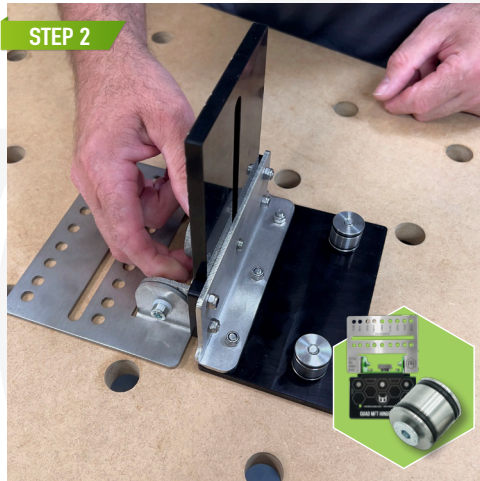
## [ ALIGNMENT PIN KIT ]



## [ QUAD BASE KIT ]



TAKE THE ALIGNMENT HINGE ADAPTOR PLATE AND (2X) THE QUAD BASES WITH ATTACHED BOLTS, THEN PLACE THEM IN THE COUNTERSUNK HOLES.



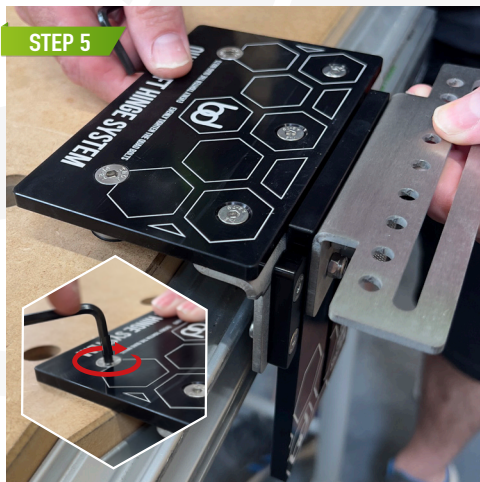
TAKE THE ALIGNMENT HINGE ADAPTOR PLATE AND THE OTHER (2X) QUAD BASES WITH ATTACHED BOLTS THEN FOLLOW THE SAME STAGES IN STEP 1.



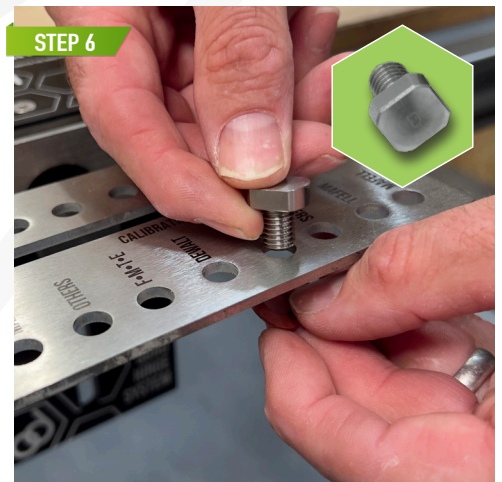
USING THE PRE-DRILLED HOLES IN YOUR MFT TOP, ENSURE THAT THE HOLES ARE A MAXIMUM DISTANCE OF 35MM FROM THE EDGE OF THE TABLE. IF YOU'RE USING OUR 346 HOLE JIG WE ADVISE THE HOLES ARE 48MM FROM A ROW OF HOLES.



LOCATE THE QUAD BASES AND INSERT ALIGNMENT ADAPTOR PLATE INTO THE FIRST TWO HOLES CLOSEST TO YOU AND LOCK THIS INTO PLACE USING THE 4MM HEX KEY TO TIGHTEN THE QUAD BASES UNTIL THERE IS NO MOVEMENT.



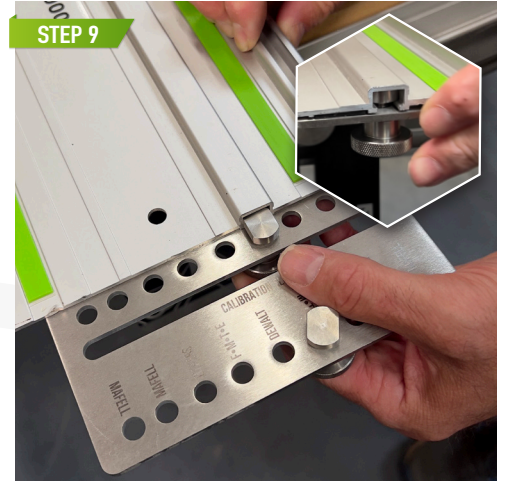
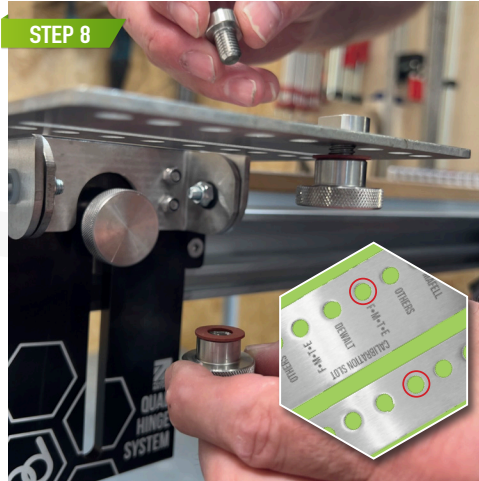
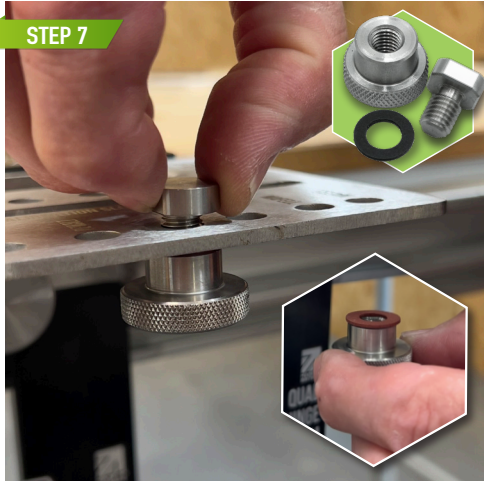
REPEATING STEP 3 ON THE OTHER SIDE OF YOUR MFT TABLE AND INSERT THE HINGE ADAPTOR PLATE AND TIGHTEN IN THE SAME WAY AS STEP 4.



USING THE SUPPLIED TRACK BOLT, INSERT THESE INTO THE LABELLED TRACK BRAND HOLE. (FMTE - FESTOOL, MAKITA, TRITON, EVOLUTION)



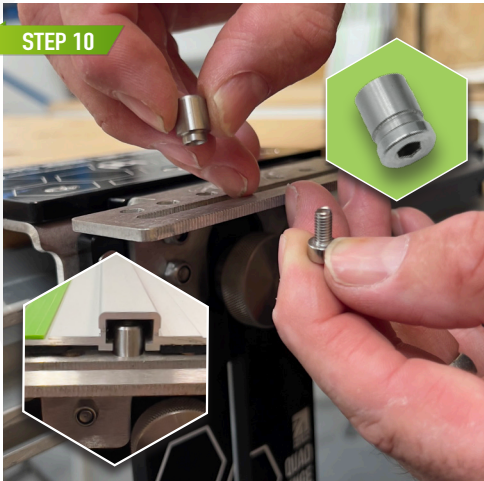
# QUAD MFT HINGE SYSTEM SET UP INSTRUCTIONS



USING THE ONE FIBRE WASHER, ATTACH THE TRACK BOLT WITH THE KNURLED FEMALE TRACK BOLT THUMBSCREW. ENSURE THERE IS PLAY LEFT TO ALLOW THE TRACK TO SLIDE IN.

FOLLOW THE SAME INSTRUCTION AS STEP 7 WITH THE OTHER FIBRE WASHER AND FEMALE TRACK BOLT THUMBSCREW, PUTTING THIS IN ALIGN WITH THE TRACK BOLT YOU HAVE PREVIOUSLY FITTED.

SLIDE YOUR TRACK INTO THE BOLTS AND LINE UP THE EDGE OF THE TRACK WITH THE EDGE OF THE HINGE PLATE AND TIGHTEN UP THE TRACK BOLT THUMBSCREWS TO SECURE THIS ONTO THE TRACK



LOCATE THE SUPPLIED ALIGNMENT PIN WHICH FITS WITH YOUR BRAND OF TRACK. ALIGN THIS IN THE HOLE THAT SITS OPPOSITE TO YOUR TRACK BOLTS.

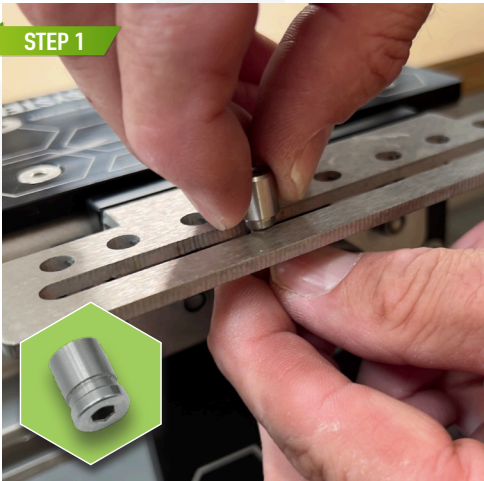
CHECK THAT THE HINGE LIFTS INTO A VERTICAL POSITION AND IT STAYS IN AN UPRIGHT OR LOWERING POSITION. THERE WILL BE SOME LATERAL MOVEMENT, THIS IS NORMAL AND WILL NOT MOVE ONCE LOCATED IN THE ALIGNMENT PIN

ADJUST TENSION TO ACHIEVE THE DESIRED FORCE TO ALLOW THE TRACK TO HOLD ITSELF.

## CALIBRATION STEPS

IF YOUR MFT IS NOT SQUARE YOU CAN STILL ACHIEVE SQUARE CUTS BY MOVING 2 PARTS AND CALIBRATING TO YOUR FENCE OR YOUR PRECISION TRIANGLE WITH BENCH DOGS.

## USING A FENCE SYSTEM



MOVE THE ALIGNMENT PIN INTO THE LONG SLOT AND LEAVE LOOSE.

MOVE THE INNER TRACK BOLT AND PLACE THIS INTO THE CALIBRATION SLOT AND LEAVE LOOSE.

LINE UP YOUR TRACK WITH THE TRACK BOLTS AND SLIDE IN.



# QUAD MFT HINGE SYSTEM SET UP INSTRUCTIONS



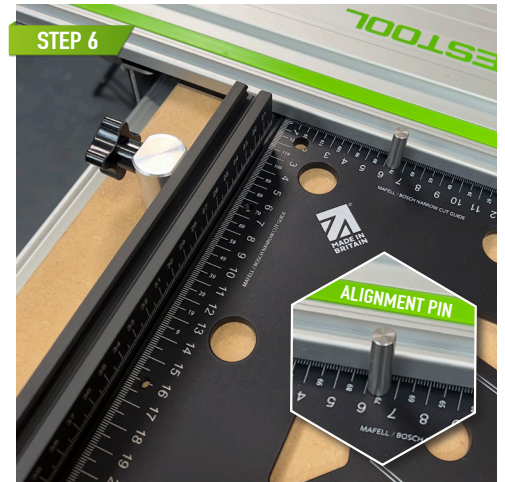
**STEP 4**

LEAVE THE FENCE DOGS LOOSE SO THAT THE FENCE IS ABLE TO SLIDE FREELY. ALIGN THE FENCE UP AGAINST THE ALIGNMENT ADAPTER PLATE.



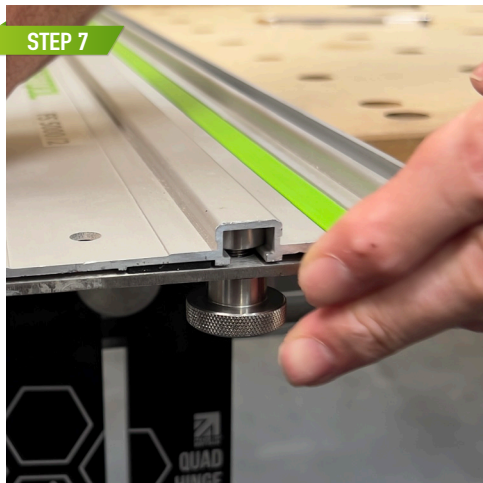
**STEP 5**

PUT THE TRACK DOWN ON TOP OF THE FENCE AND SLIDE THE FENCE ALONG SO IT IS IN LINE WITH THE EDGE OF THE TRACK, THEN TIGHTEN UP YOUR FENCE DOGS.



**STEP 6**

CHECK THE SQUARENESS OF THE TRACK USING OUR PRECISION TRIANGLE. USE THIS TO SQUARE UP YOUR TRACK WITH THE FENCE OR USING BENCH DOGS.



**STEP 7**

ONCE SQUARE, TIGHTEN THE THUMBSCREW ON THE TRACK BOLT AND RE-CHECK FOR SQUARENESS.



**STEP 8**

ALIGN THE TRACK TO THE ALIGNMENT PIN AND PUT THE TRACK DOWN ONTO THE PIN.



**STEP 9**

TIGHTEN THE ALIGNMENT PIN HEX BOLT WITH THE HEX KEY AND YOUR TRACK IS NOW CALIBRATED.

## USING A PRECISION TRIANGLE WITH BENCH DOGS



**STEP 1**

FOLLOW THE CALIBRATION STEPS FROM 1 TO 3 AND PLACE TWO BENCH DOGS HORIZONTALLY ALONG SIDE ONE ANOTHER IN YOUR MFT TOP AND THEN BUTT UP OUR TRIANGLE AGAINST IT.



**STEP 2**

USING THE ALIGNMENT PINS SCREWED TO YOUR TRIANGLE, YOU CAN SLIDE THIS UP TO THE TRACK AND HAVE THE ALIGNMENT PINS PRESSING AGAINST THE TRIANGLE. GIVING YOU AN INDICATION ON WHETHER YOUR TRACK IS SQUARE.



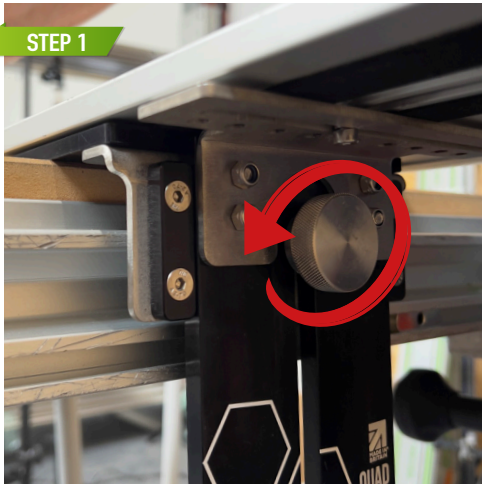
**STEP 3**

THEN FINALLY FOLLOWING THE CALIBRATION STEPS FROM 7 TO 9.



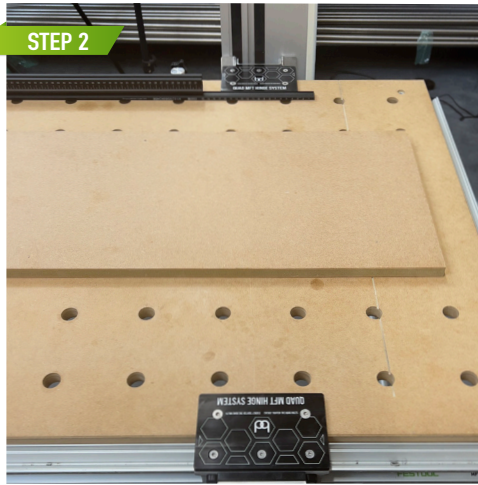
# MK3 RAIL SQUARE ULTRA REPEAT STOP SET UP INSTRUCTIONS

## ADJUSTING THE HEIGHT



STEP 1

LOOSEN THE KNURLED THUMBSCREW ON BOTH ENDS



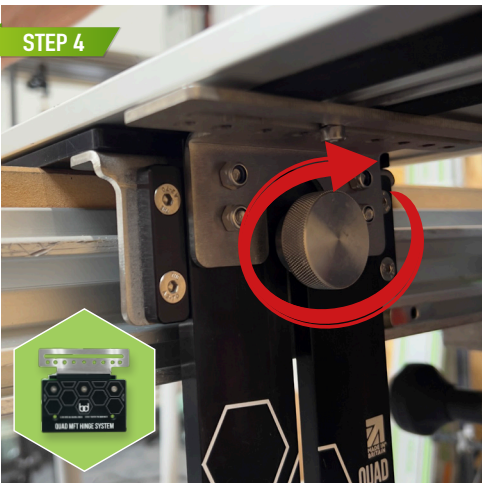
STEP 2

LIFT THE TRACK UP AND SLIDE THE PIECE OF MATERIAL YOU ARE GOING TO CUT UNDERNEATH THE TRACK.



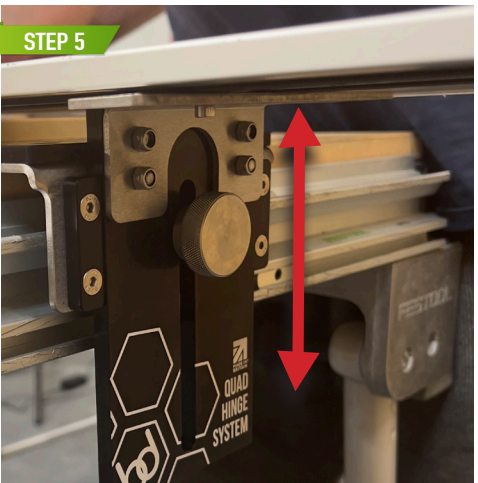
STEP 3

PUT THE TRACK BACK DOWN AND PLACE YOUR HAND ON THE TRACK ADDING PRESSURE.



STEP 4

TIGHTEN THE KNURLED THUMBSCREWS ON THE HINGE ADAPTOR PLATE.



STEP 5

LIFT THE HINGE ADAPTOR PLATE WITH THE ALIGNMENT PIN.



STEP 6

TIGHTEN THE KNURLED THUMBSCREW ON THE ALIGNMENT ADAPTOR PLATE AND IT IS READY TO USE.