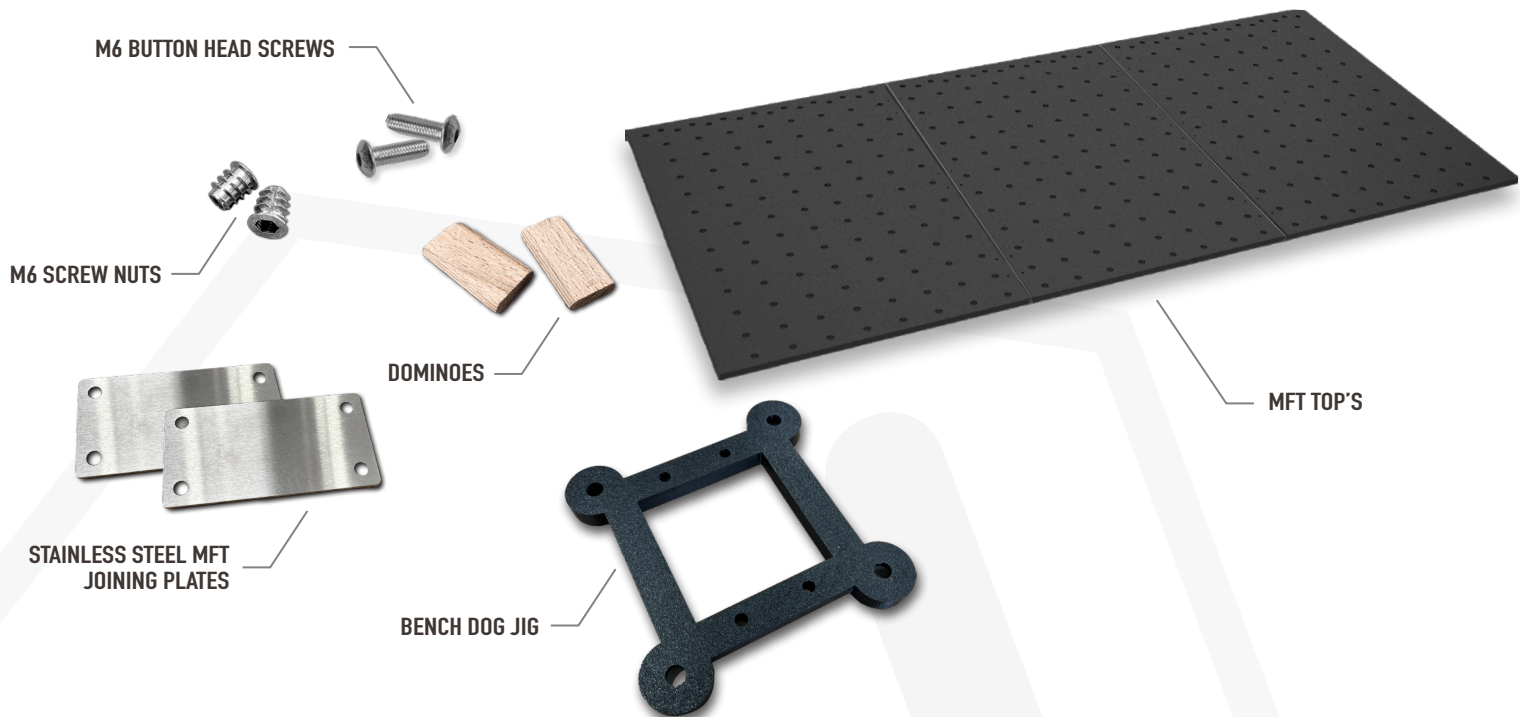
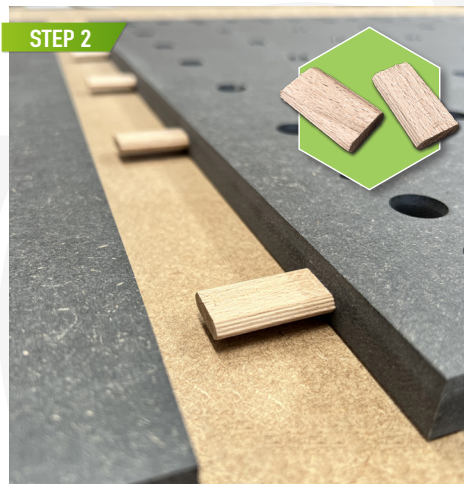


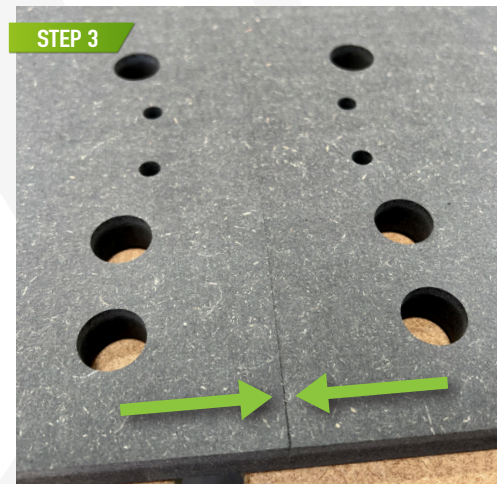
MFT TOP SET UP INSTRUCTIONS



TOPSIDE OF THE MFT TOP – SCREW THE M6 SCREW NUTS INTO THE 8MM WITH 12MM RECESS HOLES WITH A M6 HEX KEY.



ONCE THE M6 SCREW NUTS ARE IN PLACE, TURN THE MFT TOP UPSIDE DOWN WITH THE BENCHDOG TOOLS LOGO FACING DOWN. THEN INSERT THE SUPPLIED DOMINOES WHERE REQUIRED



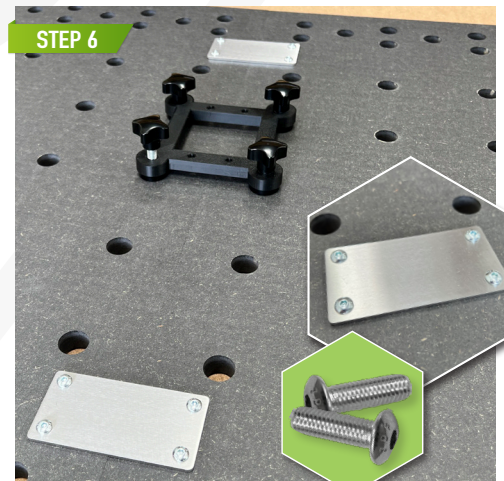
PUSH THE TWO MFT TOPS TOGETHER AND REPEAT IF REQUIRED ON ALL MFT TOPS, MAKING SURE THEY ARE SITTING FLUSH.



USING THE SUPPLIED BENCH DOG JIG AND 4x BENCH DOGS. PUT THE BENCH DOGS (NOT INCLUDED IN THE KIT) INSIDE THE HOLES OF THE BENCH DOG JIG AND SCREW THEM INTO PLACE USING 4x M8 THUMBSCREWS (NOT INCLUDED IN THE KIT).



PUSH THE BENCH DOG JIG INTO THE MFT TOP USING TWO BENCH DOGS. MAKE SURE EVERYTHING IS ALIGNED.



TAKING THE M6 BUTTON HEAD SCREWS AND THE MFT JOINING PLATES, SCREW THESE INTO PLACE. ONCE SCREWED DOWN YOU CAN NOW FLIP YOUR MFT TOP OVER.