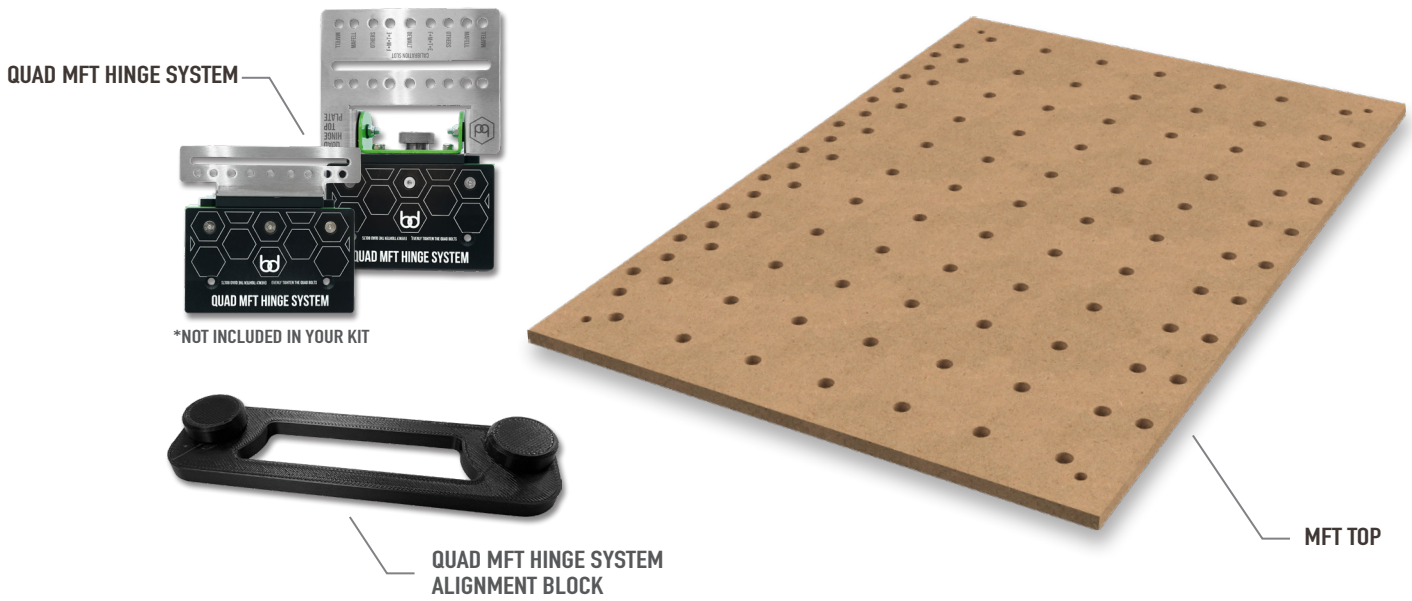


SETTING UP THE MFT HINGE SYSTEM



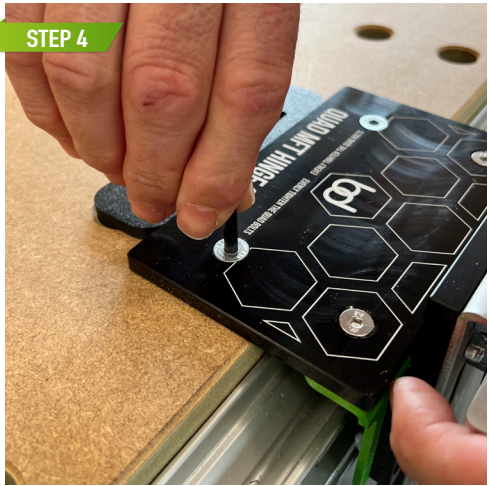
USING THE QUAD MFT QUAD HINGE SYSTEM ALIGNMENT BLOCK, PLACE THIS INTO THE TOP TWO HOLES THAT ARE POSITIONED AWAY FROM THE EDGE OF THE MFT TOP.



TAKING THE QUAD HINGE SYSTEM, PLACE THE QUAD BASES INTO THE MFT TOP HOLES.



PUSH THE QUAD HINGE SYSTEM DOWN UNTIL ITS FLUSH TO THE MFT TOP.



USING A 4MM HEX KEY, TIGHTEN THESE BOLTS UP UNTIL THE HINGE SYSTEM IS SECURELY FITTED ONTO THE MFT TOP.



NOW THAT YOU HAVE ONE PART OF YOUR HINGE SYSTEM INSTALLED, YOU CAN REPLICATE THE SAME STEPS OVER ON THE OTHER SIDE.



NOW THAT THE HINGE SYSTEM IS LOCKED INTO PLACE, YOU ARE NOW ABLE TO USE YOUR HINGE SYSTEM WITH THE BENCHDOGS MFT TOP.