

ROUTER BIG BASE SET UP INSTRUCTIONS



TAKE YOUR ROUTER AND REMOVE THE ORIGINAL BASE PLATE, AND ATTACH YOUR CHOSEN BRAND PLATE USING THE SUPPLIED M4X5 HEX SCREWS AND SCREW THESE INTO THE HOLES CLOSEST TO THE MIDDLE USING A 3MM HEX KEY.



TAKE YOUR ROUTER BIG BASE MAKING SURE THE SIDE WITH THE LASER MARKINGS ARE POINTING UP.



TAKING THE ROUTER WITH THE ATTACHED BRAND PLATE, TURN THIS THE RIGHT WAY AND SLOT THE ROUTER INTO THE BIG BASE PLATE. THEN USING THE SUPPLIED M5X8 THUMBSCREWS, SCREW THE BRAND PLATE INTO PLACE.

(IF YOU HAVE A BOSCH PLATE THEN YOU WILL NEED TO USE THE SUPPLIED M5X10 COUNTERSUNK SCREWS AND 3MM HEX KEY)

ATTACHING THE ROUTER GUIDE BUSH



TAKE YOUR STAINLESS STEEL GUIDE BUSH PLATE AND YOUR CHOSEN SIZE GUIDE BUSH UPSIDE DOWN AND SLOT IT IN THE HOLE FROM UNDERNEATH.



USING THE M25 GUIDE BUSH RING, SCREW THIS ONTO THE TOP OF THE THREADED GUIDE BUSH RING AND TIGHTEN.



NOW THAT THE GUIDE BUSH RING IS SECURE YOU CAN THEN PLACE THIS ON TOP OF YOUR ROUTER.

ROUTER BIG BASE SET UP INSTRUCTIONS



STEP 4



USING THE SUPPLIED M4X8 SCREWS, SCREW THESE INTO THE HOLES CLOSEST TO THE MIDDLE USING A 3MM HEX KEY



STEP 5

TAKING THE ROUTER WITH THE ATTACHED STAINLESS STEEL BRAND PLATE, TURN THIS THE RIGHT WAY AND SLOT THIS PLATE INTO THE ROUTER BIG BASE PLATE.



STEP 6



USING THE SUPPLIED 5X8 THUMBSCREWS, SCREW THESE INTO THE BIG BASE PLATE SECURELY.

(IF YOU HAVE A BOSCH PLATE THEN YOU WILL NEED TO USE THE SUPPLIED M5X10 COUNTERSUNK SCREWS AND 3MM HEX KEY)

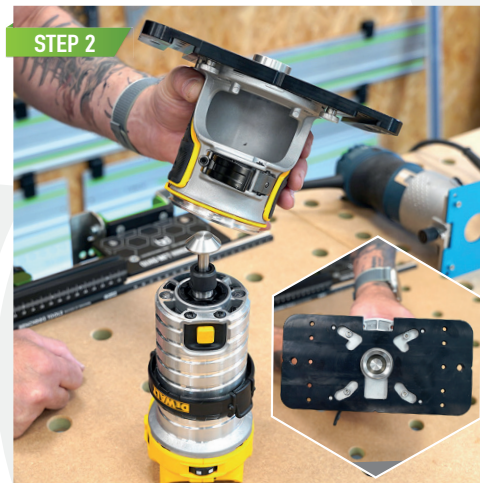
MANDREL



STEP 1



TAKING THE MANDREL, SLOT THIS INTO YOUR ROUTER. THIS ALLOWS YOU TO CENTRE THE GUIDE BUSH TO YOUR ROUTER MAKING SURE THAT IT'S ALIGNED.



STEP 2



TAKE YOUR ROUTER WITH THE MANDREL AND PLACE THE OTHER HALF OF YOUR ROUTER WITH THE BIG BASE PLATE OVER THE TOP OF THE MANDREL.



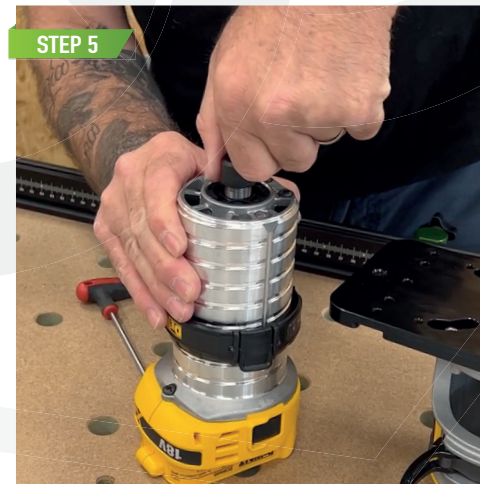
STEP 3

LOOSEN UP ALL FOUR OF THE HEX SCREWS AND THIS WILL ALLOW YOU TO CENTRALISE IT TO THE MANDREL. THEN YOU ARE NOW ABLE TO TIGHTEN BACK UP THE SCREWS ONCE THE BIG BASE IS IN PLACE.



STEP 4

YOU CAN NOW LIFT OFF THE OTHER HALF OF THE ROUTER AGAIN AND YOUR GUIDE BUSH WILL BE CORRECTLY POSITIONED.



STEP 5

YOU CAN NOW REMOVE THE MANDREL FROM YOUR ROUTER, PUT YOUR ROUTER BIT IN REPLACEMENT AND YOU CAN NOW PUT BACK THE OTHER HALF OF THE ROUTER.



STEP 6

ROUTER BIG BASE SET UP INSTRUCTIONS

CENTRING WHEELS



TURN YOUR ROUTER UPSIDE DOWN WITH THE ROUTER BIG BASE FACING YOU. USING THE CENTRING WHEELS, SIMPLY SCREW THESE INTO PLACE ON EITHER SIDE OF THE BIG BASE SO THAT THEY ARE FULLY TIGHTENED.



THIS WILL THEN ALLOW YOU TO USE YOUR ROUTER AS A SELF CENTRING TOOL WHEN YOU NEED IT TO.



WHEN USING THE CENTRING WHEELS, MAKE SURE TO HAVE ONE WHEEL ON EITHER SIDE OF THE WORKPIECE.

TRACK ADAPTERS



TAKE BOTH TRACK ADAPTERS AND PLACE IN THE SLOTS PROVIDED ON THE BIG BASE PLATE.



SCREW IN THE SUPPLIED THUMBSCREWS INTO THE BIG BASE BUT DON'T FULLY TIGHTEN.



PICK UP YOUR ROUTER AND PLACE THIS ONTO YOUR BRAND OF TRACK. CLOSE UP THE GAP BETWEEN THE EDGE OF THE TRACK TO THE EDGE OF THE ROUTER BIG BASE AND LOCK THEM INTO PLACE USING THE THUMBSCREWS AND NOW THIS SHOULD SLIDE FREELY.